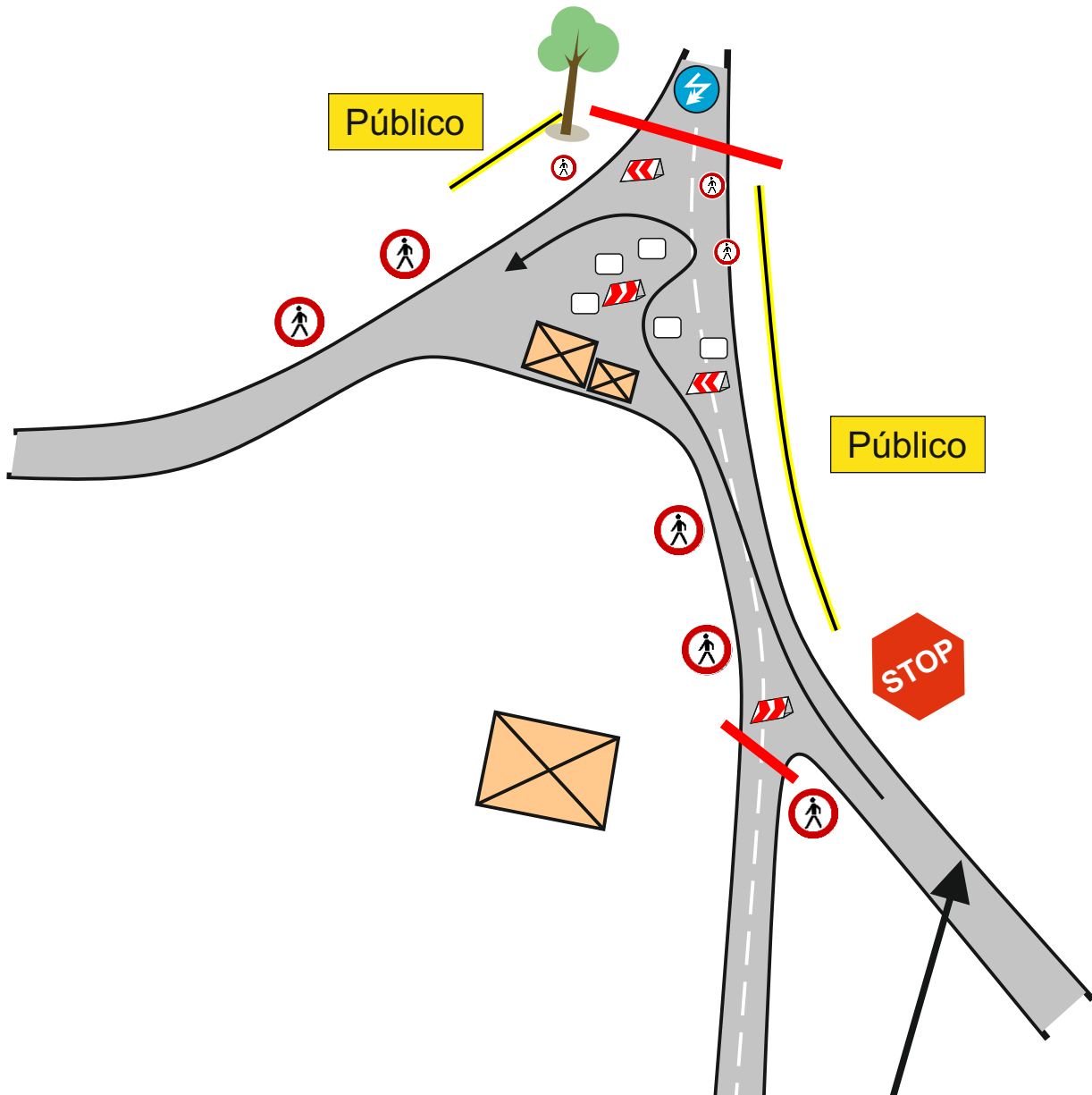


# TC-10/12 Rodeiro - Dozón

<b>Descripción</b>	<b>Punto Km</b>	<b>Página</b>
<b>Zona Especial F1</b>	<b>1,50</b>	<b>29</b>
<b>Montaje Especial F2</b>	<b>1,85</b>	<b>30</b>
<b>Montaje Especial F3</b>	<b>2,85</b>	<b>31</b>
<b>Zona Especial F4</b>	<b>6,10</b>	<b>32</b>
<b>Montaje Especial F5</b>	<b>9,40</b>	<b>33</b>
<b>Zona Especial F6</b>	<b>10,30</b>	<b>34</b>
<b>Montaje Especial F7</b>	<b>13,80</b>	<b>35</b>
<b>Zona Especial F8</b>	<b>14,80</b>	<b>36</b>

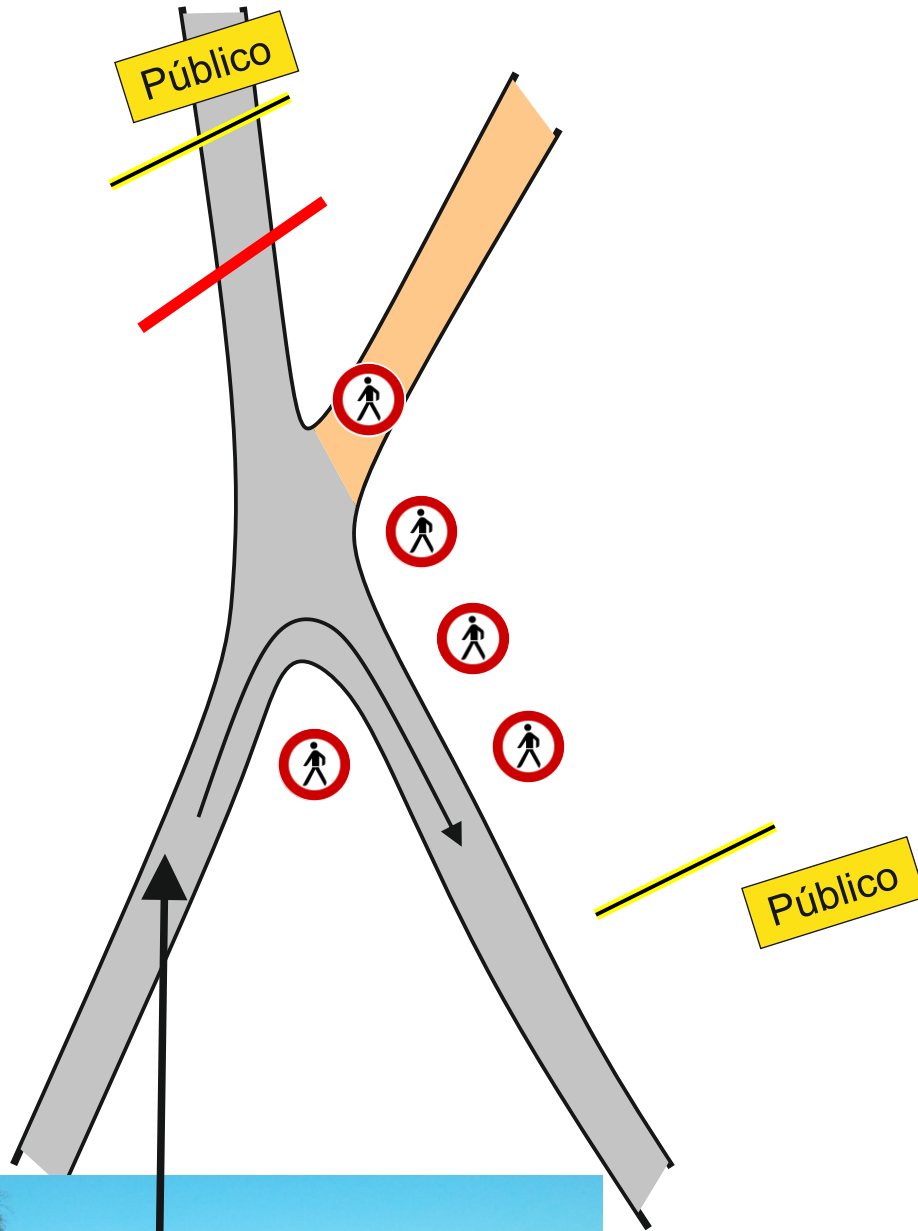


ZONA ESPECIAL **F1**

2	4

Cruce de CARBOENTES

Km. 1,50  
N 42°36'38''  
W 7°58'09''

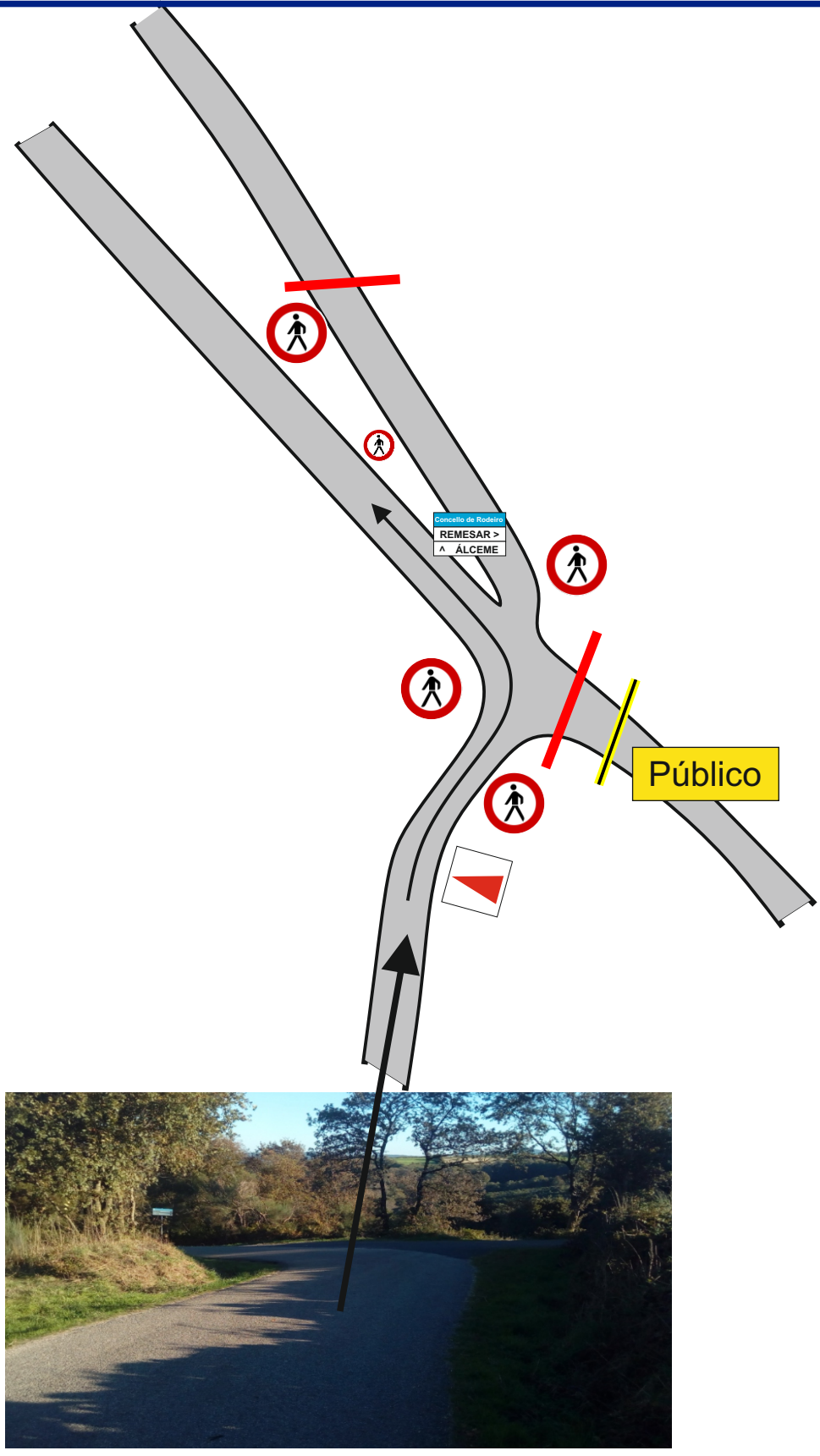


ZONA ESPECIAL **F2**



Cruce de TESTA MONTE

Km. 6,80  
N 42°36'42''  
W 7°58'27''

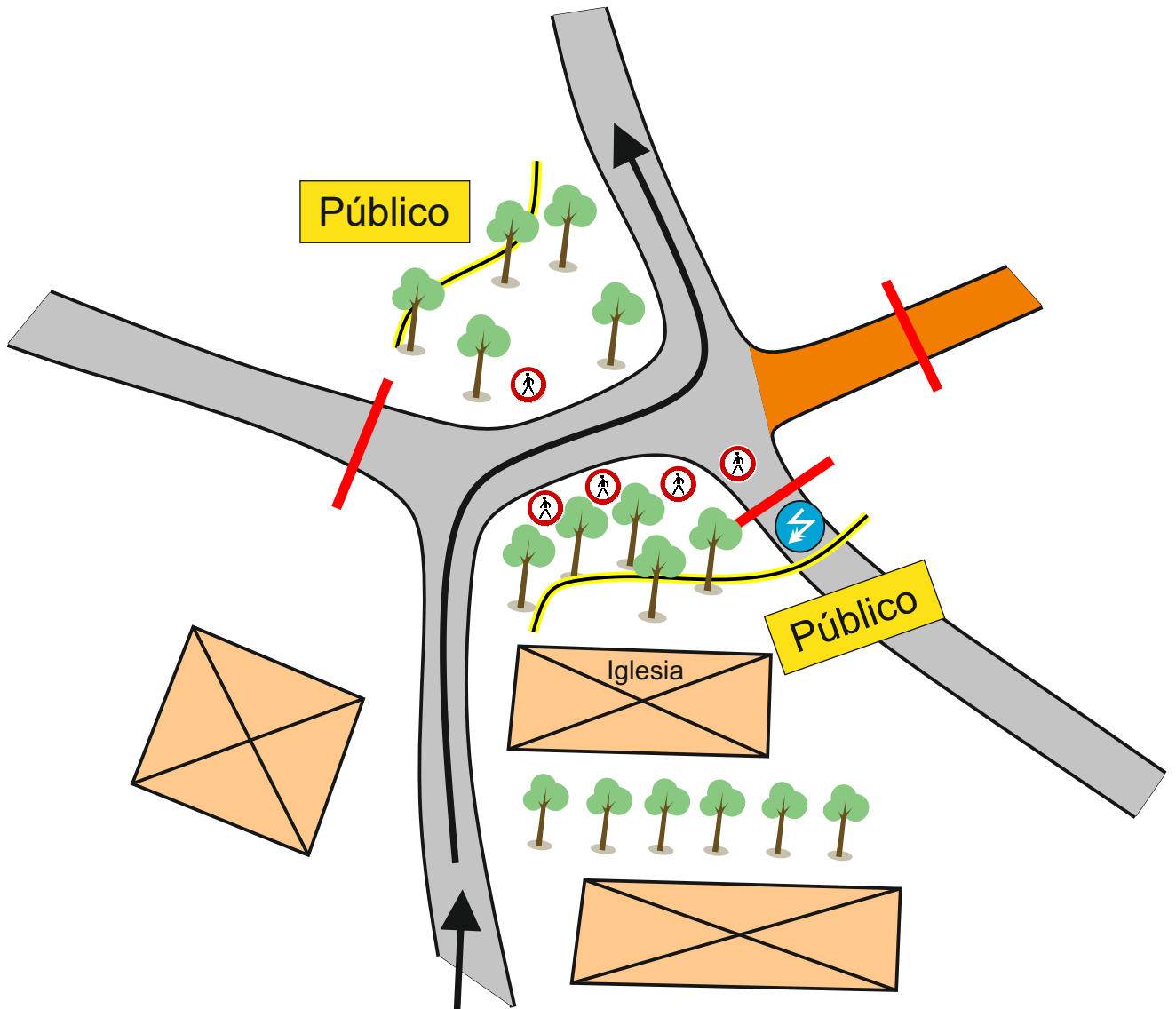


ZONA ESPECIAL **F3**

0 1

Desvío de REMESAR

Km. 7,80  
N 42°37'06''  
W 7°58'16''

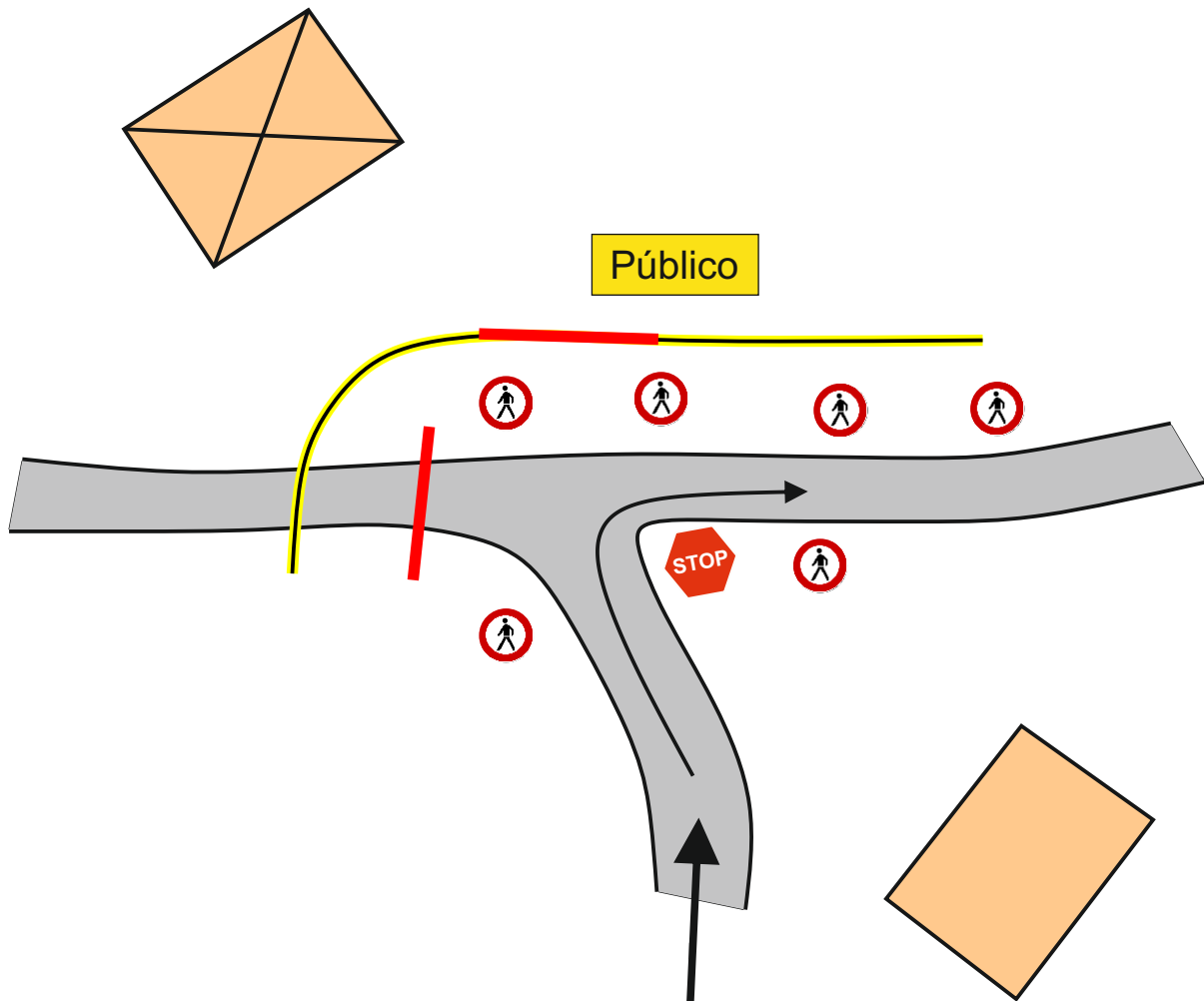


**ZONA ESPECIAL F4**

2 3

**Cruce de PAREDES**

**Km. 6,10**  
N 42°38'00''  
W 7°59'03''



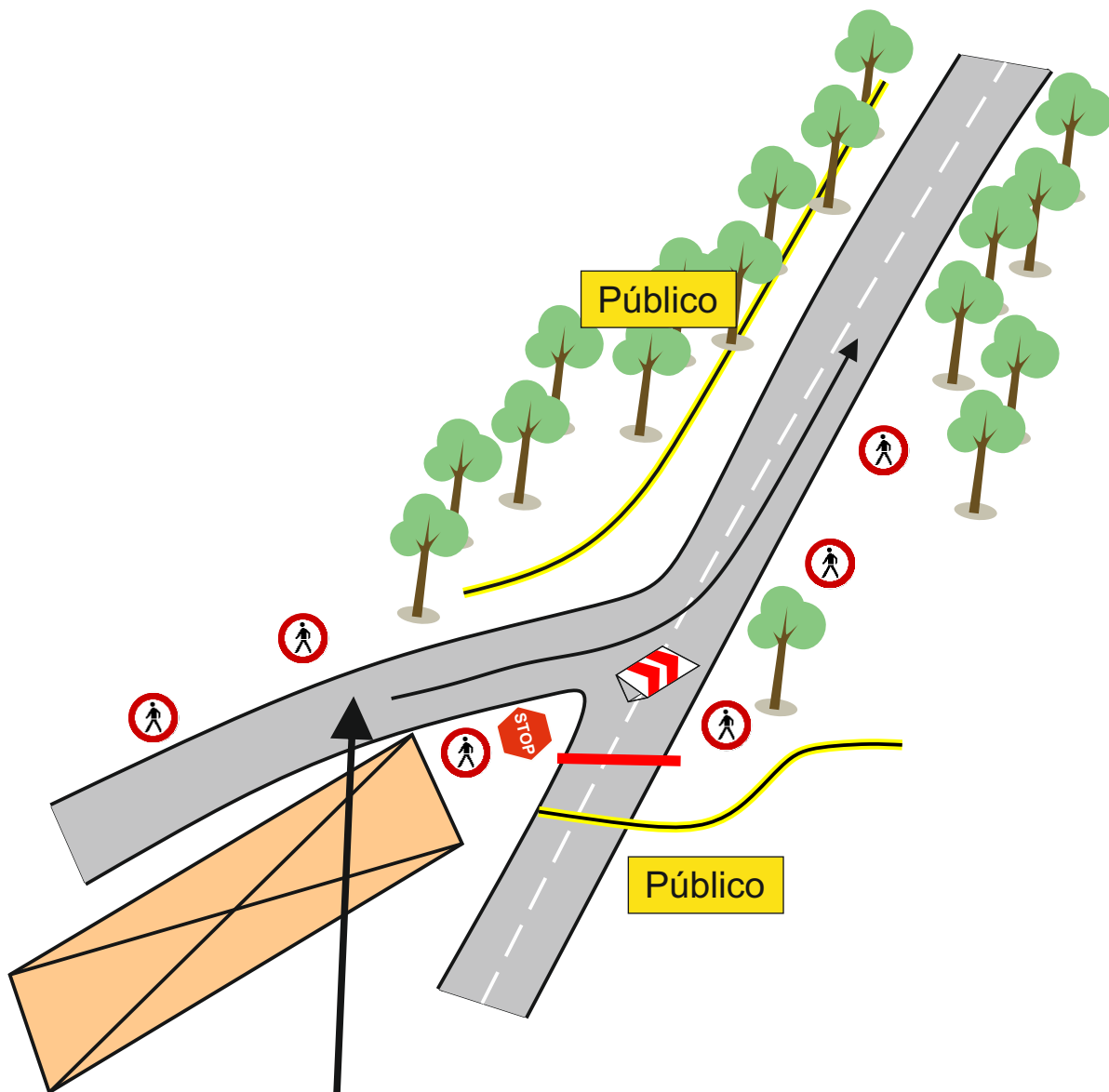
ZONA ESPECIAL **F5**

0 2

**Cruce de RAÑESTRAS**

**Km. 9,40**  
N 42°36'56''  
W 8°00'32''

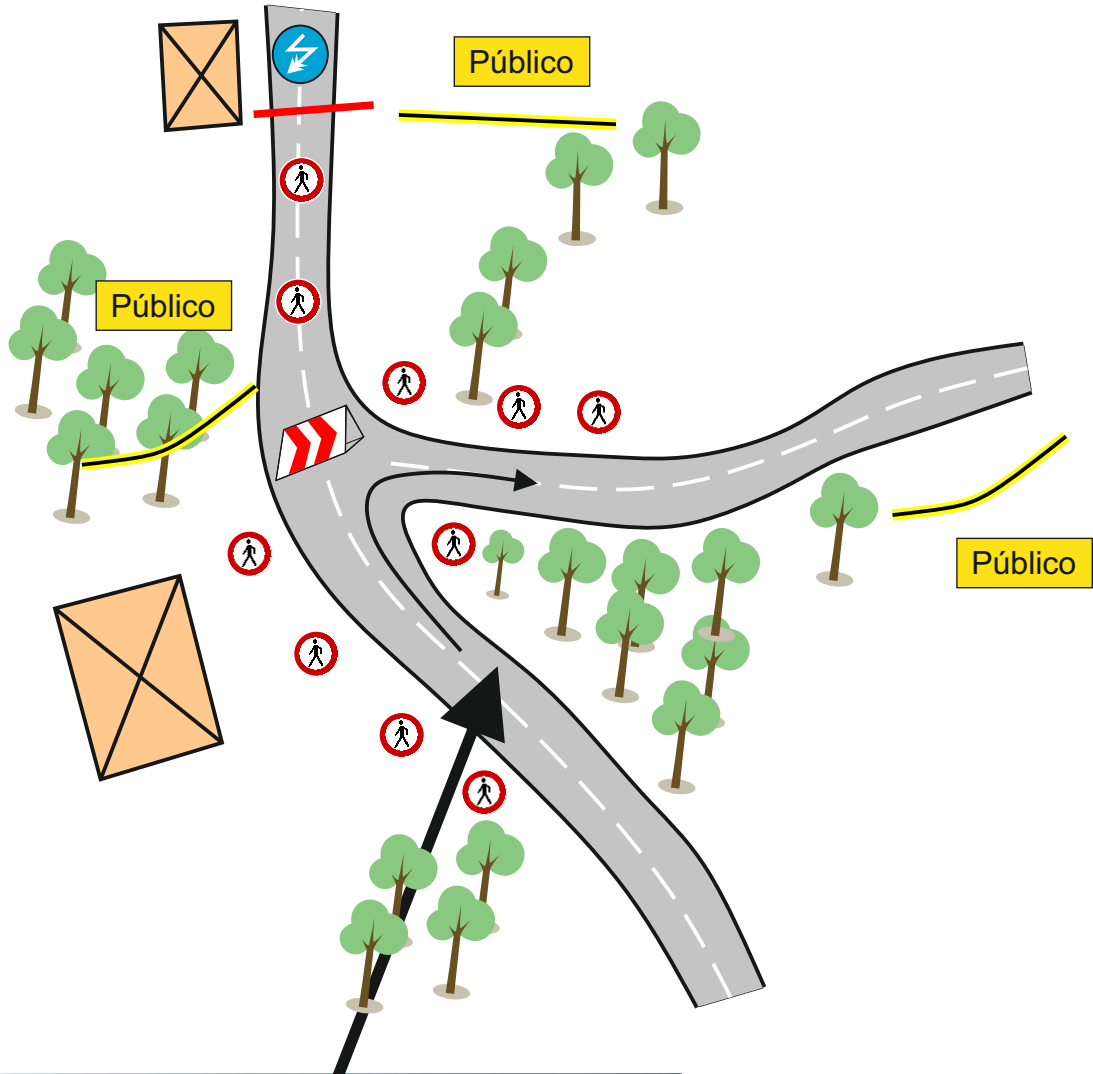


**ZONA ESPECIAL F6**

0 2

**Cruce de AS PENAS**

**Km. 10,30**  
N 42°36'32''  
W 8°00'49''



ZONA ESPECIAL **F7**

0	2

Cruce de DOZÓN

Km. 13,80  
N 42°35'04''  
W 8°01'23''